

Project Delivery

Capability Statement



Acknowledgement of Country

BG&E Resources acknowledges Aboriginal and Torres Strait Islander peoples as the first peoples of Australia and the Traditional Owners and Custodians of lands and waterways on which we work and live.

Our operations are conducted on the traditional lands of the Whadjuk people of the Noongar nation in Perth, the Bindjareb people in Mandurah, the Larrakia people in Darwin, the Kurna people in Adelaide, the Gurambilburra Wulgurukaba, Bindal, Nywaigi, and Gugu Badhun peoples in Townsville, the Turrbul and Jagera peoples in Brisbane, the Awabakal people in Newcastle, the Gadigal people of the Eora nation in Sydney, and the Wurundjeri and Boon Wurrung peoples of the Kulin nation in Melbourne.

We honour the wisdom of, and pay respect to, Elders past and present, and we acknowledge the cultural authority of all Aboriginal and Torres Strait Islander peoples across Australia.

We also acknowledge the vital contribution made by our Aboriginal and Torres Strait Islander employees and we thank those who have guided our approach and generously shared their insights.

Image: Aboriginal artwork created by Jayda Sebire (Indigenous Artist and former BG&E Resources People and Culture Assistant).
Copyright 2023, Jayda Sebire.

Maximising Capital Expenditure and Optimising Asset Performance

BG&E Resources (BGER) is a multidisciplinary engineering, project delivery and ESG consultancy, delivering technical solutions for clients in the Resources, Energy and Industrial sectors.

With offices on the East and West coasts of Australia, we are majority owned by our employees and committed to helping clients decarbonise in a net zero economy.

Our fit-for-purpose engineering solutions enable mining and raw material proponents, energy and water utilities, and port authorities to optimise the performance of their assets, minimise operational disruption, improve safety and mitigate risks.

Building on our engineering consulting expertise, we have developed a reputation for the successful delivery of projects under a range of models, including as a preferred project delivery partner.

We also act as a single point of contact for our clients working as an EPC Contractor, Owners' Engineer, Project Manager, Engineering Consultant or Commissioning Manager. Our flexibility enables us to tailor the project delivery model best suited to your needs.

BGER's proven approach to deliver schedule and cost benefits through clever engineering and true collaboration is what sets us apart.

Our people pride themselves on providing smart and sustainable solutions to complex engineering problems; and importantly, on being great people to work with.

Image: Geraldton Port Maximisation Project (PMaxP), Western Australia.





Technical Excellence

Our people are passionate about leveraging their technical ingenuity to solve complex problems.

Technical excellence is the bedrock of our business. It drives our people and propels the outcomes that we provide for clients, communities, asset owners and operators, and financiers.

Our dedicated professionals and subject matter experts focus on understanding our clients' business objectives, their desired project outcomes, as well as the latest industry research for the sectors in which we operate.

A Premium Client Experience

The success of our project work depends on leveraging the best expertise of our people. That's why we allocate the most qualified professionals to help realise our clients' development vision and bring their projects to life.

Our work is underpinned by strong engineering design principles, industry-leading technology and pragmatic advice to deliver exceptional outcomes, every time.

This approach provides the following benefits:

- Ease of understanding of regulatory frameworks
- Efficient navigation through the development approvals process
- Protection and preservation of our cultural heritage, the environment and waterways
- Healthy, transparent and trusted relationships are established with stakeholder groups
- Respectful liaison with Traditional Owners is undertaken
- Fair and equitable outcomes are achieved for First Nations' communities
- Project knowledge is retained, including lessons learned
- Innovation is embraced and deployed.

Technical Leadership Team

The quality and excellence of our world and ability to deliver the best technical and cost-effective solutions for our clients is guided by our Technical Leadership Team.

Led by the most senior members of our business, this team facilitates learning and knowledge transfer, professional collaboration and mentorship to drive continuous excellence in our technical capabilities. It also encourages our people to perform to high technical standards and rewards staff for incorporating innovation into projects.

Image: Steve Ash and Kanishka Pathirana at Paraburdoo Train Load Out Facility, Pilbara WA.

Safety is at the Heart of our Business

Our diverse and culturally aware teams embrace safe work practices that are environmentally sound.

Safety is integral to everything we do at BG&E Resources. We care about our people, clients, and the communities in which we operate, and strive for zero harm in everything we do.

Health, safety and quality are embedded in our work practices, while heritage and sustainability are considered throughout the entire project life cycle.

We recognise the importance of continuously reviewing safety in design issues at all stages of a project, from investigation, design, construction, operation (including maintenance), closure and rehabilitation.

Exceeding regulatory obligations, we leverage a formalised Health, Safety, Environment and Quality Management framework that allows us to analyse and implement practical measures to mitigate risks.



Leadership

- Understanding of client needs
- Technical Leadership Team governance
- Strong Chartered presence
- Adherence to Technical Standards & Regulatory Instruments
- Committed to Technical Excellence
- Striving for low-carbon impacts



Systems

- ISO Accredited Quality Management System (QMS)
- Design Assurance
- Engineering Verification Procedures
- Safety in Design
- Net Zero in Design
- Risk Mitigation & Management
- Project Governance (Action Tracking, Monitoring, Performance & Auditing)
- Continuous Improvement (Lessons Learnt)



Characteristics

- Client Centric
- Risk Adverse
- Reliable
- Accountable
- Innovative
- Simplification
- Community & Culture



Image: Lucy Nguyen at Cape Lambert Port Facility, Karratha WA.



Image: Indigenous peoples' hands. Copyright approved via Shutterstock.

Respecting, Protecting and Preserving our Cultural Heritage

Diversity across our workforce and our supply chain is vital.

Our clients trust in our ability to enhance their social license to operate, including through the provision of mutually rewarding cultural heritage consultation and management, healthy Indigenous partnerships, and ethical procurement from Aboriginal-owned and operated businesses.

Working with Traditional Owners, First Nations peoples, Indigenous Prescribed Body Corporates and Aboriginal Corporations, is seeded in early engagement as it enables our team to deliver benefits for today (across the life cycle of proponents' projects) and for future generations.

Early engagement underpins our approach to cultural heritage management as it enables us to understand the needs and desires of all stakeholder groups, as well as any existing Indigenous Land Use Agreements (ILUAs) which have been registered with the National Native Title Tribunal (NNTT).

We partner with highly experienced local archaeologists and ethnographic specialists to provide clients with access to an abundance of heritage site data, and to collectively undertake walk-throughs of proposed project sites.

From the Kimberley in the North to Esperance in the South of WA, across central Australia and along the Eastern seaboard – we engage with Traditional Owners and Custodians, Prescribed Body Corporates (PBCs), Aboriginal development corporations and First Nations communities to preserve their cultural heritage and when helping proponents and/or government agencies to deliver projects.

Cultural Heritage Management Capabilities

- Stakeholder consultation and engagement to help Traditional Custodians of the land and Native Title Claimants to establish IULAs, registration to the NNTT and compensation frameworks (among others).
- Advice for proponents regarding the application of legislation including the Native Title Act 1993, Heritage Act 1972 (Aboriginal Cultural Heritage Bill 2021) and Repeal Bill 2023.
- Developing scopes for archaeological and ethnographic surveys.
- Indigenous business contracting (including teaming with Aboriginal-owned and Supply Nation-certified businesses to develop First Nations regional workforces).
- Capacity building (including coaching, mentoring and career pathway development, etc. for First Nations peoples).
- Reconciliation Action Plans.

First Nations' Partnerships

We have a range of actions in place to increase Aboriginal and Torres Strait Islander employment and engagement in our business, to help First Nations communities become self-sustaining (current participation is approximately 1.5 per cent of our workforce and we are striving to increase that to three per cent by December 2025).

We proudly support Aboriginal and Torres Strait Islander owned businesses and have established a majority-owned Aboriginal company, TICS (WA) Pty Ltd (TICS). TICS is a NATA-accredited laboratory to ISO 17025, providing nondestructive testing (NDT) services.

Similarly, we have strategic partnering arrangements with several Aboriginal-owned businesses, including Karlayura Contracting, which provides design and construction support for clients.

We have also established a similar partnering agreement with i24s, an Aboriginal-owned and operated workforce company, providing security, civil works and commercial cleaning services for mine sites in remote locations across Australia, as well as for commercial premises in capital cities (their clients include BHP, Horizon Power and Cundaline Resources, among others).

Most recently, we also established a partnership with Pirrpala, a 100 per cent Aboriginal-owned and operated small scale project delivery provider.

Our partnerships also span the globe, specifically in China, for the procurement of equipment and professional services, including on Country inspections of fabrication, testing, compliance and design reviews.

Reconciliation

Review our [Innovate Reconciliation Action Plan](#), [Aboriginal and Torres Strait Islander Engagement Strategy](#), [Human Rights Statement](#) and [Anti-Discrimination Policy](#).

Project Delivery

Providing end-to-end project delivery services – for Greenfield developments, Brownfield improvements and fully integrated mine-to-port projects – to maximise capital expenditure and asset performance.

Building on our engineering consulting expertise, we have developed a reputation for the successful delivery of projects under a range of models, including as a preferred project delivery partner.

We also act as a single point of contact for our clients working as an EPC Contractor, Owners' Engineer, Project Manager, Engineering Consultant or Commissioning Manager. Our flexibility enables us to tailor the project delivery model best suited to your needs.

Our Approach

As a preferred engineering, design and project delivery partner, we coordinate all design, procurement and construction work on behalf of our clients to ensure projects are delivered safely and sustainably, on-time and on-budget with quality and performance integrated throughout.

The foundation of our success in project delivery lies in having a flexible and efficient approach, understanding our clients' drivers, influences and objectives and establishing appropriate governance and controls.

Our end-to-end capabilities are comprised of quality engineering and design, effective procurement strategies including contracts and tenders as well as robust construction management approaches and on-site representation.

Our Difference

Fostering trust and teamwork is at the heart of our approach. We take the time to understand the needs and objectives of our clients, and partner to develop the optimal delivery strategy for projects.

Our comprehensive services and unprecedented depth of knowledge across all phases of the delivery life cycle enable our clients to maximise the life and profitability of their assets while minimising risk and downtime.

BGER applies advanced technologies, value engineering techniques and industry best practices to minimise schedule and cost variations while optimising the constructability, maintainability and operability of assets.

Leveraging our team's ingenuity, multidisciplinary engineering skills and in-house expertise, we provide contemporary advice on program strategies with support and leadership to enable a seamless transition throughout the delivery process.

Our strengths are in the development of innovative designs and our pragmatic approach to providing unique solutions to complex engineering problems. We understand the importance of communication and collaboration and always adopt a best-for-project lens to the decisions we make.



Capabilities

Engineering

- Scoping and Feasibility Studies
- Concept Design, Detailed Design and Documentation
- Value Engineering and Optioneering
- Remedial Works and Durability Assessments
- Asset Management and Optimisation
- Inspection and Maintenance
- Independent Verification and Certification
- Decommissioning and Rehabilitation

Procurement

- Pre-Contract Support including ECI and Tender Management
- Bid Evaluation including Technical, Commercial, Schedule and Construction
- Post-Contract Award including Package Management and Progress Reporting
- Quality Management including Inspections, FATs and ITPs/MDRs

Construction Management

- Sub-Contractor Management
- Client Engineering Representation
- Project Controls (i.e. Scheduling, Cost Management, Quality, etc.)
- HSE Management and Support
- Progress Claim Assessment and Certification
- HSE Support

Completion and Commissioning

- Completions Management
 - Systemisation Plans
 - Walkdown and Handover Planning
 - A-ITR Coordination
 - Vendor Coordination
- Commissioning Management
 - Commissioning Management (from Pre-Commissioning to Handover)
 - Commissioning Management Plans
 - Commissioning Planning and Schedule Development
 - ITR matrix, ITR Management and Handover Dossier Compilation
 - Vendor Management
- Operations Readiness Support
 - Stakeholder Management
 - Ramp-Up Planning

Commercial

- Project Controls including P6 Planning, Scheduling and Impact Analysis
- Project Commercial Guidelines, Templates and Flowcharts
- Clarifications and Claim Management
- Supply Chain Management and Strategies
- Cost Management
- Risk Management and Root Cause Analysis

Engineering

Our team is comprised of industry leading engineers and designers with access to a wide network of specialists.

BGER has an established track record in the successful delivery of owner's engineering services and industrial projects across Australia. Our teams have unsurpassed access to materials knowledge, research and advice, allowing us to provide expert advice in a range of areas.

We offer practical, quality advice across all stages of project development and operation of an asset, from pre-tender through construction to operation and maintenance. This advice allows asset owners to achieve more efficient design outcomes and maximise the utility of the asset across its life cycle.

BGER utilises a well-established process for incorporating safety in design. This includes a detailed approach with regular reviews.

These occur both internally and with the client and are undertaken during the design process to ensure a full understanding and treatment of potential risks.

A full asset life cycle approach is undertaken that incorporates reviews for constructability, maintainability and operability. Follow up reviews are undertaken once construction contractors are appointed.

Our strengths are in the development of innovative designs and our pragmatic approach to providing unique solutions to engineering problems. We understand the importance of collaboration and communication, with our team always looking to optimise a 'best for project' outcome in the engineering decisions that we make.

Capabilities

- Scoping and Feasibility Studies
- Concept Design
- Detailed Design and Documentation
- Value Engineering and Optioneering
- Independent Verification and Certification
- Plant Troubleshooting and De-Bottlenecking
- Asset Management
- Inspection and Maintenance
- Remedial Works
- Durability Assessments
- Decommissioning and Rehabilitation

Images: White Quartz
Road Construction,
Pilbara WA.



Procurement

BGER has the experience and expertise available to assist our clients with managing head contracts, from pre-contract planning and tender support through to delivery and completion of the contracted works. We are happy to work as an integrated team or remotely from our dedicated project offices.

Some aspects of our capabilities include developing tender strategies, reviewing tender responses, undertaking contractor due-diligence and mitigating commercial risk by co-ordinating all aspects of our client's subcontractors.

Capabilities

Tender and Pre-Contract Planning and Programming

- Detailed Construction Program
- Prepare Work Schedules and procurement delivery schedules
- Building Methodology Statements
- Prepare Work Package briefs and Tender Specifications
- Obtain regulatory and authority approvals as required

Project Controls

- Cost Controls – Services Cost
- Cost Control – Capital Cost
- Capital Cost Estimating
- Earned Value Production Analysis
- Risk Management
- EOT and Delay Claim analysis
- Project Scheduling

Image: Culverts at Iron Bridge Site, WA.





Construction Management

From engagement through to mobilisation, execution and construction completion - we manage our clients' contractors.

BGER has demonstrated success in the direct supervision of contractors to minimise construction costs and maximise operability.

We assist in implementing changes on-site in real-time to achieve best-for-project outcomes.

Our Project Engineers and Construction Superintendents manage quality aspects of site works to design parameters and monitor project safety requirements in collaboration with client safety representatives.

Our on-site personnel assist client project teams to implement project controls to manage contractors' schedules, cost overruns and claims.

Capabilities

- Contractor/Sub-Contractor Management
- Client Engineering Representation
- Preparation of Designs to IFC
- Project Controls - Scheduling, Cost Management, Quality, etc.
- Quality Inspection Works
- Change Management
- HSE Management and Support
- Defects Liability Management
- Progress Claim Assessment and Certification
- Oversight of Commissioning and Project Handover
- Stakeholder Engagement

Projects



Geraldton Port Maximisation Project (PMaxP)

Client: Mid-West Port Authority (MWPA)

Our team is providing project delivery services for PMaxP to increase trade at Geraldton Port from 16 Mtpa to 25 Mtpa by 2026.

In May 2022, the State Government announced its investment into MWPA's PMaxP in response to growing demand from industry in the region.

The \$350 million infrastructure project will enable MWPA to facilitate diverse and emerging trade opportunities and significantly increase throughput capacity over the next 10 years.

In September 2022, BGER was engaged to provide project delivery services.

Our teams have made great progress, advancing to detailed design to improve berth capability (Berth 1 & 6) to accommodate a shiploader and provide for additional trade.

Detailed design of the Lease 11 Truck unloader is now complete and features innovative water recycling techniques to ensure optimal water quality for washing down and maintaining the new facility.

Scope of works:

- Prepare design briefs and basis of designs for PMaxP elements
- Prepare designs to IFC Status
- Prepare works schedules and procurement delivery schedules
- Provide cost estimates of each of the work packages
- Prepared tender documents and assist with the tender process for work packages
- Offsite inspection of Procured Items including internationally procured items (including shiploader, steelwork, etc.)
- Configure and maintain project controls for the scope of work
- Undertake works Superintendence on behalf of MWPA
- Manage all the site works associated with the PMaxP to ensure they are delivered safely, to the required quality and in accordance with the established budgets and schedules
- Oversee commissioning and project handover to MWPA Operations.

Image: Geraldton Port Maximisation Project (PMaxP), WA.



White Quartz Road Realignment

Client: Rio Tinto

White Quartz Road (WQR) is an existing access road located approximately 55 km north-west of Tom Price in the Pilbara, Western Australia.

WQR is the primary access road from Tom Price to Rio Tinto's Brockman 4, Brockman, Nammuldi and Silvergrass Mines. The objective of the Pre-Feasibility Study was to ascertain the safest and most functional route for the realignment of White Quartz Road and provide recommendations and preliminary design for the preferred option.

The Scope of Works included approximately 2 km of new sealed access road in total, with parts of the new alignment to be staged/deferred to suit mine sequencing to provide an optimal solution, allowance for an unsealed bypass (1 km) track for future oversize loads to bypass the arch underpass and cross the haul road at a controlled gated point, relocation of an existing 33 kV overhead power line currently feeding the B4 ANFO facility and removal of existing 33 kV overhead power currently within the future mining areas.

BGER provided design, tendering, evaluation, procurement and variation management from Vendors to the Rio Tinto Procurement team, transport logistics and receipt at site of the following packages:

- Mechanical equipment for a new vehicle wash down bay
- Oily water separator packages – Ultraspin Technology
- Standpipe and sump pump package – Truflo
- Automatic Access gate house equipment - SEME
- Culvert package for civil drainage of road realignment works – Roundel
- Road Safety Barriers – W-Beam Guard rails – Ingal Civil
- Warehouse Kiosk Transformer 100 Kva – Excess Power
- Temporary power supply – 200 Kva Generator and control panel – Aggreko

Image: White Quartz Road Construction, Pilbara WA.

Our team also provided geotechnical engineering support by engaging and directly managing 4D Geotechnics to monitor geotechnical progress of civil works, material suitability and concrete arch foundation preparation.

BGER provided project engineers (Civil, Structural and EIC), construction superintendents and HSE advisors as part of the owner's team to assist with the delivery of BGER's design. Our engineers undertook:

- Management and Surveillance of Main Contractor
- Safety development
- Managing vendor supplied procurement items on behalf of client; including technical clarification with Rio Tinto subject matter experts and vendors.
- Management of Telstra fibre optic subcontractor to realign critical communications for the entire Rio Tinto Greater Brockman Operations.





Image: Construction of the East Rockingham Waste to Energy facility, Rockingham WA.

Paraburdoo Reclaimer Yard Rail

Client: Rio Tinto

We played a key role as Owner's Engineer and Design Engineer to remediate the reclaimer rails and extend design life by 25 years.

The stockyard at Paraburdoo consists of four (4) stockpiles, each 430 m long. These stockpiles are reclaimed using two bridge type reclaimers, running on dedicated reclaimer rails parallel to each stockpile.

BG&E Resources was engaged to develop the detailed design for the remediation solution for the reclaimer rails and foundation which involved re-design of an in-situ design and construction methodology to provide a design life of a further 25 years.

We also served as the Owner's Engineer and Design Engineer on the project and provided on-site support personnel – one Senior Project Engineer and one Project Engineer to track progress, facilitate quality coordination and expedite technical queries.

East Rockingham Waste to Energy Project

Image: Paraburdoo Stockyard, Paraburdoo WA.

Client: Acciona

As the Owner's Engineer and Design Engineer, we supported all aspects across detailed design and construction.

The East Rockingham Waste to Energy Project is a 300,000 tp/a diesel fired waste to energy facility.

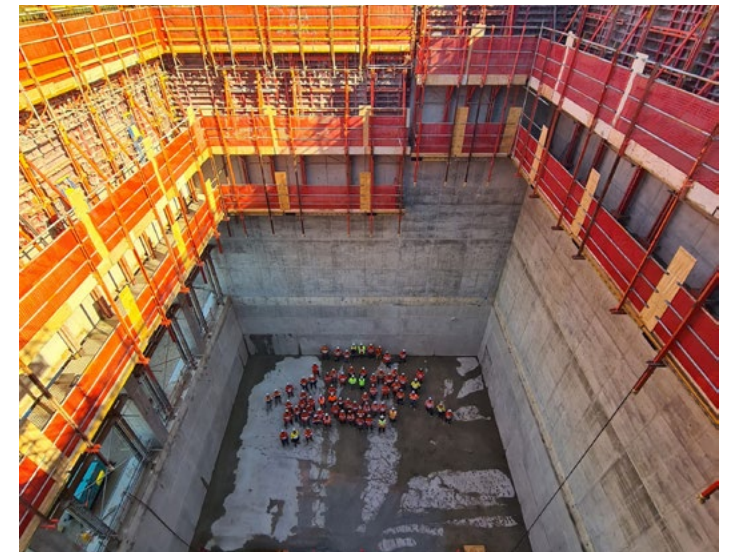
Now complete, the facility is a cost-effective waste treatment solution and vital source of dispatchable renewable energy designed to achieve 96% diversion of residual waste from landfill.

The facility receives and convert domestic waste from the local regional council to reusable energy to meet nominated environmental standards.

The design and construction of the \$500 million project was undertaken by Acciona and BGER acted as the Owner's Engineer and Design Engineer.

The plant is designed to produce approximately 29 MW of power to be exported into the grid from the site substation.

Through our team of multidisciplinary engineers, we identified and implemented a range of cost reduction initiatives while also providing technical oversight for all aspects of the project.





Crusher Structural Remediations

Client: Dacian Gold

We assisted with the resolution of the structural dynamics with on-site vibration monitoring.

Image: Crusher at Mt Morgans Gold Mine, Laverton WA.

Initially engaged to undertake independent structural analysis and recommend remedial works required to mitigate risk of future damage; BGER also worked with ALS who undertook on-site measurement to confirm high risk areas and provide Dacian Gold with a strategy to minimise risk of future damage without loss of production.

Our specialist engineers completed engineering and design for the brownfields crushing system structural remediation.

Following the completion of the design to IFC stage, BGER's Project Delivery Team managed the works on behalf of the client both off-site and on-site including:

- Estimating, planning, scheduling and procurement on behalf of the client.
- Management of procurement.
- Project Construction Management of subcontractors during the execution phase.

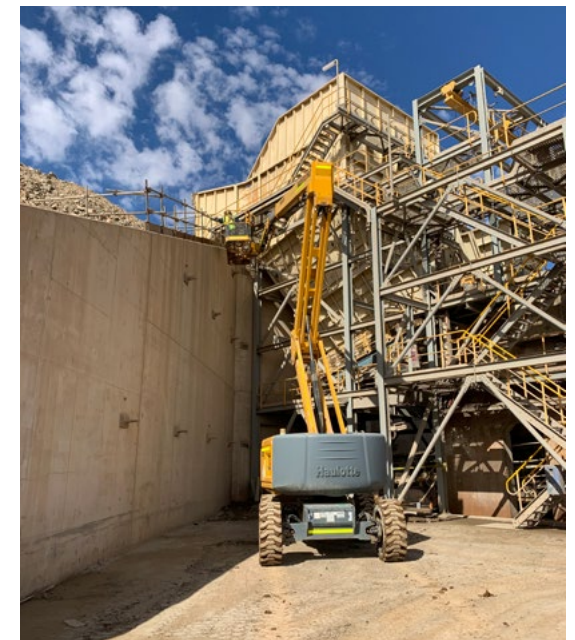




Image: Roy Hill WHIMS Plant, Pilbara WA.

Ultrafines 1.5

Client: Roy Hill

Owner's Engineer, BGER identified significant capital savings and reductions in the construction schedule.

The Ultrafines 1.5 project involved an extension to the existing Ultrafines Iron Recovery Circuit, consisting of 7 WHIMS (Wet High Intensity Magnetic Separation) units, three units which included adding six new cyclone clusters, LIMS (Low Intensity Magnetic Separation) and WHIMS units, 12 new Oversize screens and associated hoppers and pumps.

To improve the fines recovery, a spirals circuit was added to the above to treat the screen oversize with additional spirals banks and dewatering cyclones. The spiral circuit further consists of 4 agitated tanks, screens and associated pumps configured to operate as three discrete operating modules.

The design scope included a fully developed, multi-disciplinary detailed design to allow the client to execute the project. The scope was broken into 2 main separable portions, consisting of the initial 3 WHIMS modules, with all the brownfields interfaces to existing services and plant, and the second separable portion consisting of the 3 Spirals Circuit modules.

Dewatering Engineering Support

Image: Dewatering Contractor Management - Paraburadoo, WA.

Client: Rio Tinto

Acting as the Project Engineer, we managed contractors on behalf of Rio Tinto to deliver all dewatering projects at Paraburadoo to tight schedules.

BGER worked with the Project Lead with on-site support to:

- Provide implementation support via answering technical queries and closing gaps within the scopes of work.
- Ensure the contractor's installations are in line with client quality specifications and the contract.
- Identify non-conformances throughout implementation and follow NCR process.

Our office-based support included:

- Co-ordinating drawing and design reviews with relevant client stakeholders within Sustaining Capital and Operations.
- Preparing and implementing stage gates - from estimates, schedule reviews, risk reviews, options analysis, scope of works and capital expenditure applications with assistance from relevant project support personnel.
- Compiling and producing document packages for RFT/RFQ.



Our Project Delivery Team



Craig Bloxham
Managing Director

Craig is responsible for managing, growing and diversifying the business to drive improved financial performance, robust corporate governance and positive health, safety and community outcomes.

Craig leverages his considerable experience in leading major infrastructure projects to fulfil the company's growth and ESG ambitions. He was the Delivery Director for the \$10 billion Roy Hill iron ore project, in the Pilbara region of Western Australia (WA). He also served as the Project Director – Infrastructure for this mega-scale Greenfields development, managing all the early works packages for the aerodrome, access roads, bulk earthworks, utilities (power, water and backbone communications) and NPI facilities.



Tony Comerford
Technical Director

With more than 35 years' experience, Tony manages the technical delivery of projects for BGER's clients, in the fast-paced Resources, Energy and Industrial sectors.

Tony sets the technical and engineering standards for client engagements, which spans conceptual design, detailed design, documentation, project management, construction management and commissioning of complex, multidisciplinary Greenfield and Brownfield projects. He draws on this experience coupled with his expertise in metals processing and refining, chemical plants, port facilities and industrial operations, to deliver tangible and measurable value to clients.



Joe Allen
Director, Operations and
Director, Resources

Joe oversees the operations of BGER and spearheads the company's work in the Resources sector.

With up to 20 years' experience, spanning traditional commodities and critical and rare earth minerals, Joe is a seasoned professional who has undertaken design, construction management and operation of mineral processing plants, power generation systems and infrastructure, for some of the world's largest Resources companies.

Joe's specialised skills encompass concept studies, layout development and precise capital cost estimates across the entire project life cycle. He excels in coordinating the interface between engineering and project execution. And, he has recently led the development of several lithium and renewable energy projects, including a world-class green steel hub and various hydrogen initiatives.



Doug Tapper
Director, Energy

Doug leads BGER's growing Energy business and is motivated by helping clients to transition to a new energy future. He has 25 years of experience in delivering strategic and technical advice across engineering and to help finance projects.

Playing a key role in applying our Net Zero in Design™ approach, Doug helps clients navigate the fast-changing technology and regulatory environment, to provide clear strategies to reach net zero. His vast experience covers the areas of gas and diesel-fired generation, cogeneration, islanded generation, conventional thermal plant and more recently in renewable technologies and large-scale energy storage.

He has spent most of his career working in the Energy and Infrastructure sectors, with a focus on project management and has substantial technical and commercial expertise.



Lee Illingworth
General Manager

Lee has 20 years' experience and proven commercial acumen operating within Energy, Mining Services, Heavy Industry, Manufacturing and Up Stream Oil and Gas Services.

Lee is a demonstrated safety leader who actively influences organisational safety culture through visible field leadership, mentoring combined with ensuring policy and procedure are followed.

He has demonstrated contract negotiation skills at a senior level within Western Australia both with contractors and tier 1 clients, experience with Board Level engagement and influencing positive outcomes, and demonstrated track record in managing multi portfolio revenue stream business units.



Steve Koblenz
Procurement Specialist

Steve has more than 30 years' experience across the resources industry working on major lithium, oil and gas, iron ore and other infrastructure projects in WA which included the Pilbara Minerals Lithium-Tantalum Project, North Rankin 2 Redevelopment, Dampier to Bunbury Gas Pipeline expansion, Roy Hill, FMG's T155 Expansion, Karara Iron Ore, Oakajee Port & Rail and RTIO Koodaideri studies.

Over the past 5 years he was part of the Senior Leadership Team (SLT) at Pilbara Minerals, leading the Contracts and Procurement department that worked to build a lithium business from a start-up to one of the major lithium producers.

He has sound commercial knowledge through contract risk assessment, tendering, evaluation, negotiation, and award of major ECI, EPC, PMC, and BOO Contracts or Supply only Contracts (Bespoke and Standards Australia) from both local and foreign countries and post award management activities.

Our Project Delivery Team



Danny George General Manager, Engineering Projects

Danny is an engineering professional with up to 20 years' experience in project delivery and lump-sum turnkey EPC contracts in the mining & energy infrastructure industries.

Danny is experienced in the delivery of feasibility studies and execution projects including mineral process plants, bulk materials handling systems, port terminals, rail, and road infrastructure and has a track record of successfully delivered projects in the American, African, European, and Australian mining regions. His diverse project experience includes processing and handling infrastructure for a wide variety of commodities including iron ore, coal, gold, diamonds, copper, platinum, lithium, minerals sands and more recently hydrogen generation and green steel.



Leon Oriti Senior Project Manager

Leon is a Senior Project Manager with over 9 years of experience in the resources industry working for SKM / Jacobs, TechnipFMC, and BHP before joining BG&E Resources.

He has made a steady progression from engineering design consultant to Project Engineer and Project Manager of multidisciplinary teams. Leon has a passion for leading people and delivering results that exceed expectations for all stakeholders and create outstanding business outcomes.



Paul Blundell Senior Project Manager

Paul has over 30 years of engineering experience in many aspects associated with Infrastructure and asset life cycle.

Paul's focus is on the delivery of works either by directly managing projects or by developing and leading a team to undertake the tasks required.

He has a very broad understanding of many aspects of building and maintaining infrastructure, having experience both as the client and service provider across a multitude of projects and types of infrastructure including but not limited to service distribution networks, structures both steel and concrete, buildings, offices and workshops, mechanical and material handling, dredging, master planning, facilities development, customer focus, Asset Management and facilities management.



Toan Nguyen Commissioning Manager

Toan is a highly experienced professional with 22 years of experience in the Oil & Gas (FPSO and Onshore Facilities), Mining (Iron-Ore, Gold, Nickel, Cobalt, Vanadium, and Titanium-Oxide), Chemical, Pharmaceutical, Services, Mineral Sands, Manufacturing, Water Treatment, Power Generation (Diesel, Gas, Solar, and Wind) and Government Infrastructure Industries both in Australia and overseas. He has a proven track record of delivering projects with a strong focus on meeting the requirements of clients.



Morgan Davis HSEQ Manager

Morgan has over 20 years of experience in delivering superior safety performance for major projects and operations in Australia as well in the US, Canada, Peru, Ghana, Indonesia, and New Zealand.

He has a MHS (OHS) and MBA, which has enabled him to focus on delivering safe and efficient working environments within high performing organisations on a global scale. He has extensive experience in articulating the role of HSEQ within an organisation, highlighting how it can improve shareholder returns and enhance productivity and profitability.

His specialties include Safety Leadership and Coaching, Crisis and Recovery Strategy, Behavioural Based Programs, Audit Inspection, Mental Health First Aid, Process Simplification, Risk Management, Industrial Health Management, Wellness Programs, Compliance Investigations and Covid-19 Response.



Jamie Little General Manager, Commercial

Jamie is responsible for managing the commercial aspects of BGER's projects and providing an end-to-end service – from tender preparation to project delivery support and to financial close. He partners with our clients to manage risks and opportunities, and to optimise project delivery.

Jamie has more than 20 years' experience in overseeing the commercial aspects of projects and businesses in the Resources, Energy and Industrial sectors, including project delivery engagements, contract negotiations, project controls, insurances, supply chain management, corporate governance and compliance.

Applying a robust commercial lens to his work, Jamie has worked on minerals, energy, O&M, sustaining capital and NPI projects. He is highly skilled in strategic planning, budgeting and forecasting, project finance as well as working with disparate sets of data to build holistic business tools

Offices

Perth

Level 10
240 St Georges Terrace
Perth WA 6000
Australia
+61 8 6375 9100
info@bge-resources.com

Level 3
168 St Georges Terrace
Perth WA 6000
Australia
+ 61 8 6375 9100
info@bge-resources.com

Brisbane

Level 5, 180 Ann Street,
Brisbane QLD 4000
Australia
+61 7 3167 3300
info@bge-resources.com

Mandurah

Level 2
55 Sutton Street
Mandurah WA 6210
Australia
+61 8 6375 9100
info@bge-resources.com

Newcastle

Suite 2, Level 3
175 Scott Street
Newcastle NSW 2300
+61 2 4091 2700
info@bge-resources.com

Townsville

4a Somer Street
Hyde Park QLD 4812
Australia
+61 7 4724 0640
info@bge-resources.com

BG&E Resources is a multidisciplinary engineering, design, project delivery and advisory consultancy, providing technical solutions for clients in the Resources, Energy and Industrial sectors. We are majority owned by our employees, who are united by our purpose – together, we embrace innovation to solve complex problems, for today and future generations.

bge-resources.com

